

# Type 100 Movable Wall Data



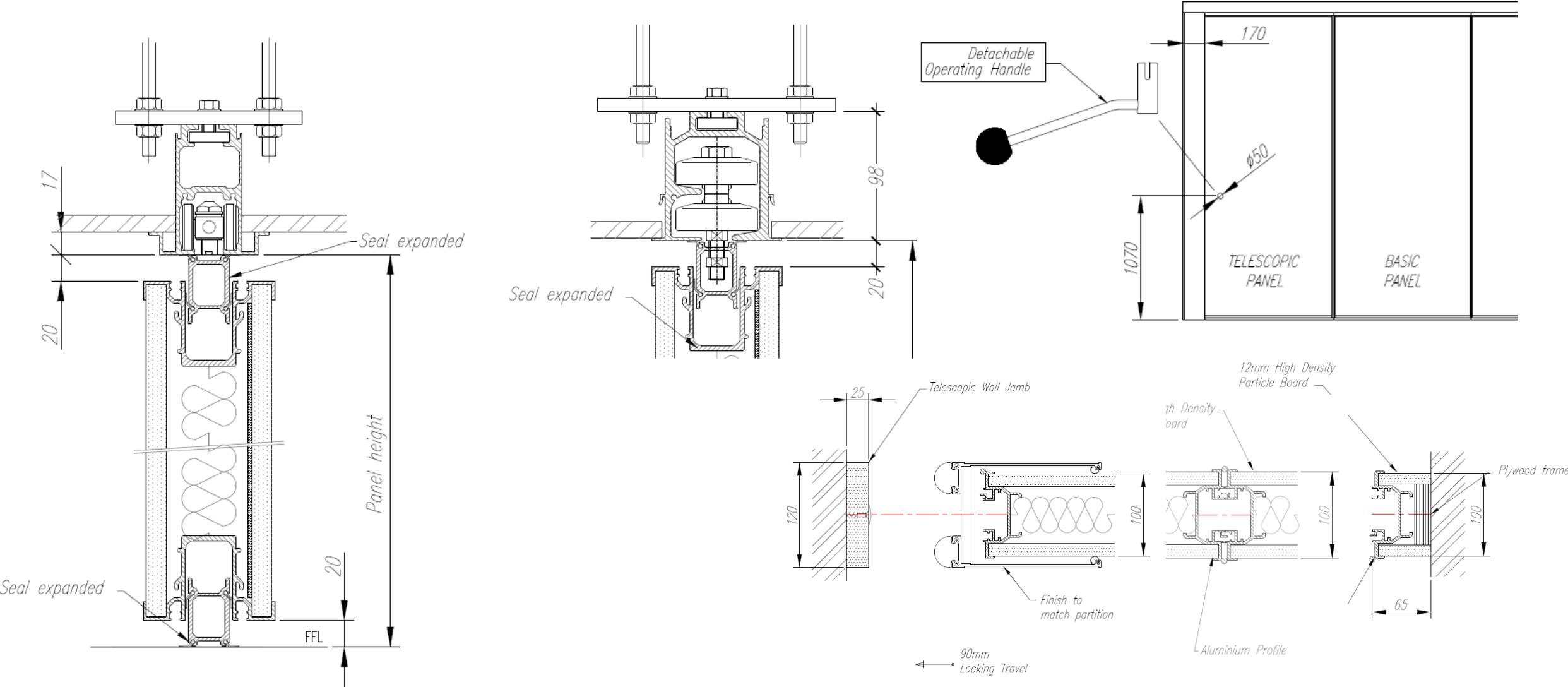
# General Product Information

The Type 100 Movable Wall is our individual panel partition offering acoustic insulation up to Rw59dB.

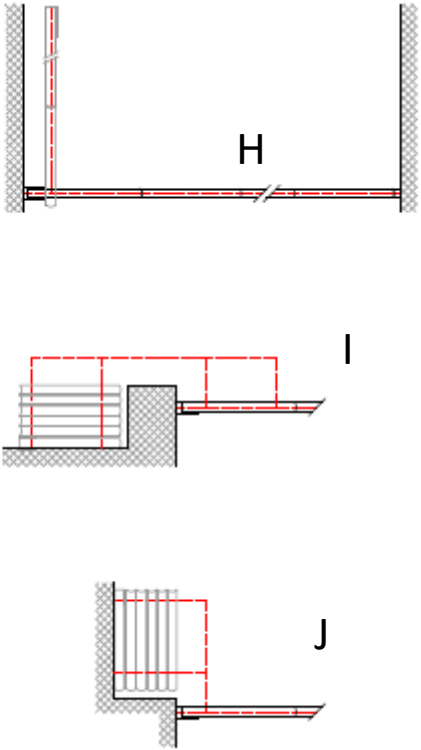
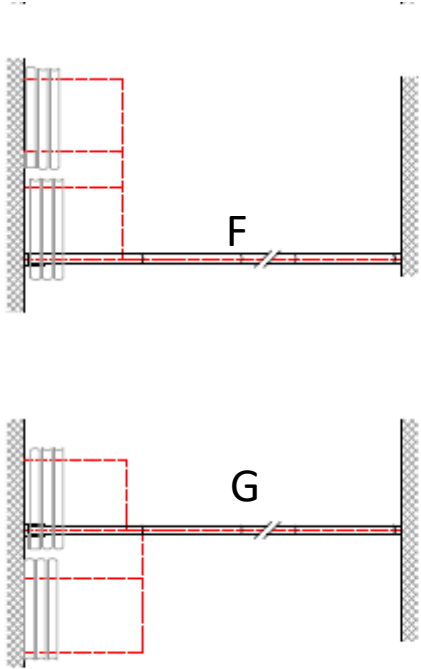
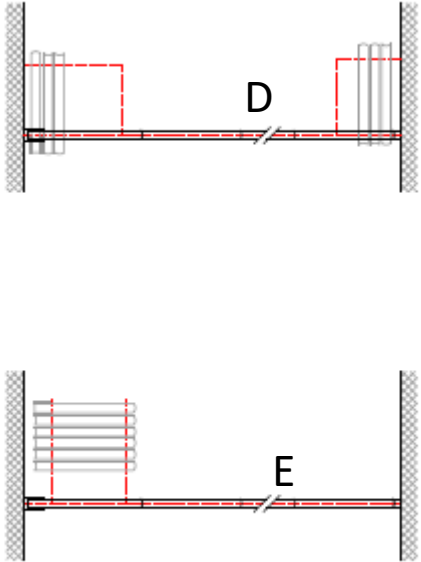
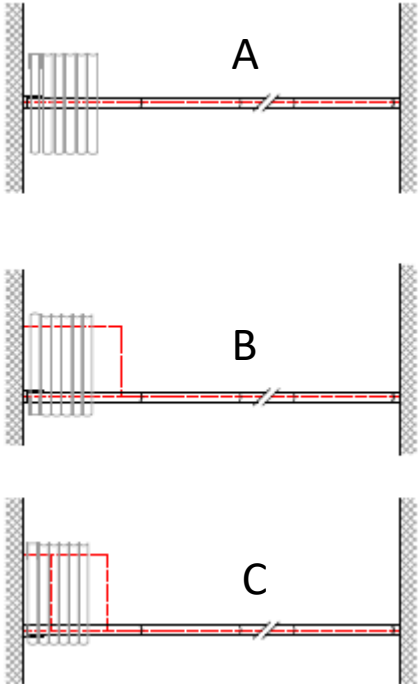
Panels are manually operated by means of an internal hydraulic link (Scissor Mechanism on high acoustic walls) and move effortlessly along an aluminium head track, when closed they form a secure fixed wall.

<b>Max Panel Width</b>	1220mm	<b>Track Finish</b>	RAL 9010 White
<b>Min Panel Width</b>	600mm	<b>Std Profile Finish</b>	Male / Female Profile in SAA (Concealed option available (Magnetic SAA on 57dB and 59dB)
<b>Max Panel Height</b>	6500mm	<b>TP Wall Jamb</b>	25 mm
<b>Min Panel Height</b>	1975mm	<b>Std Wall Jamb</b>	65 mm
<b>Panel Thickness</b>	100mm	<b>Panel Weights</b>	Rw37dB – 37 kgs Per Sq M Rw42dB - 42 kgs Per Sq M Rw46dB - 46 kgs Per Sq M Rw50dB – 50 kgs Per Sq M Rw53dB – 53 kgs Per Sq M Rw55db – 55 kgs Per Sq M Rw57dB – 64 kgs Per Sq M Rw59dB – 68 kgs Per Sq M
<b>Decibel Rating</b>	37 - 59		
<b>Configuration</b>	Single & Double Point		
<b>Seal Depths</b>	20mm		

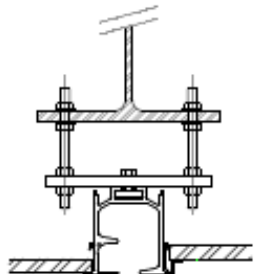
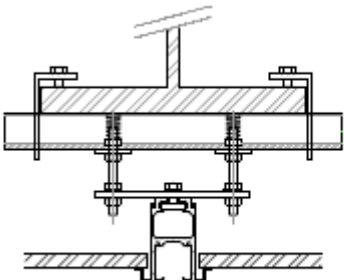
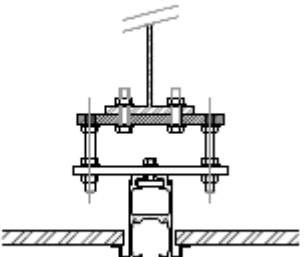
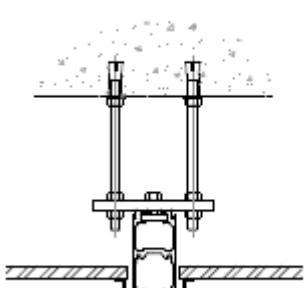
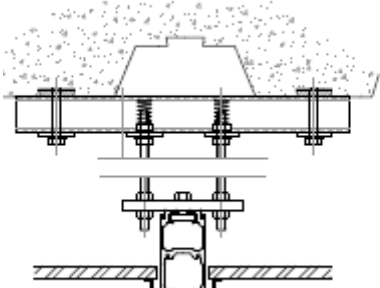
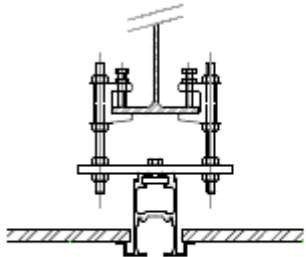
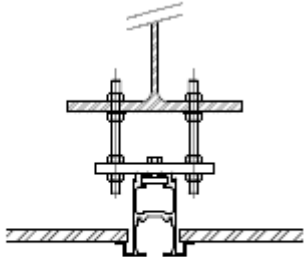
# Track and Panel Sections



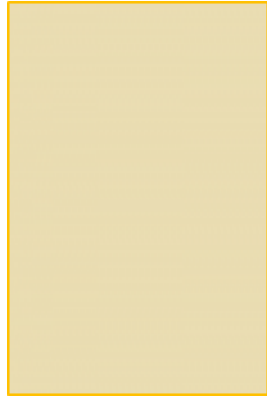
# Stack Configurations



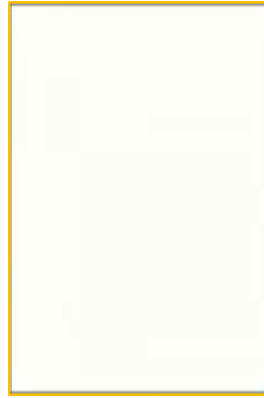
# Generic Fixing Details



# Stock Plain Colour Finishes



Cream



White



Light Grey

For projects with 5 panels or more, we are able to offer a wider range of colours from the White, Plain Colour or Woodgrains from [www.geaves.com/melamine-board/duhospa](http://www.geaves.com/melamine-board/duhospa) at no extra charge.

Gloss, High Pressure Laminate or Real Timber Veneer is available at extra cost.

# Stock Woodgrain Finishes



Birch



Ash



Maple



Beech



Oak

For projects with 5 panels or more, we are able to offer a wider range of colours from the White, Plain Colour or Woodgrains from [www.geaves.com/melamine-board/duhospan](http://www.geaves.com/melamine-board/duhospan) at no extra charge.

Gloss, High Pressure Laminate or Real Timber Veneer is available at extra cost.

**Multispace Systems Type 100 Movable Walls**